

Pengantar Blok 1.5

UROGENITAL

Blok 1.5
Koordinator

TUJUAN BLOK

- Mahasiswa mampu menjelaskan struktur dan fungsi sistem urogenital, keseimbangan asam basa dan elektrolit, peranannya dalam homeostasis serta korelasi klinisnya

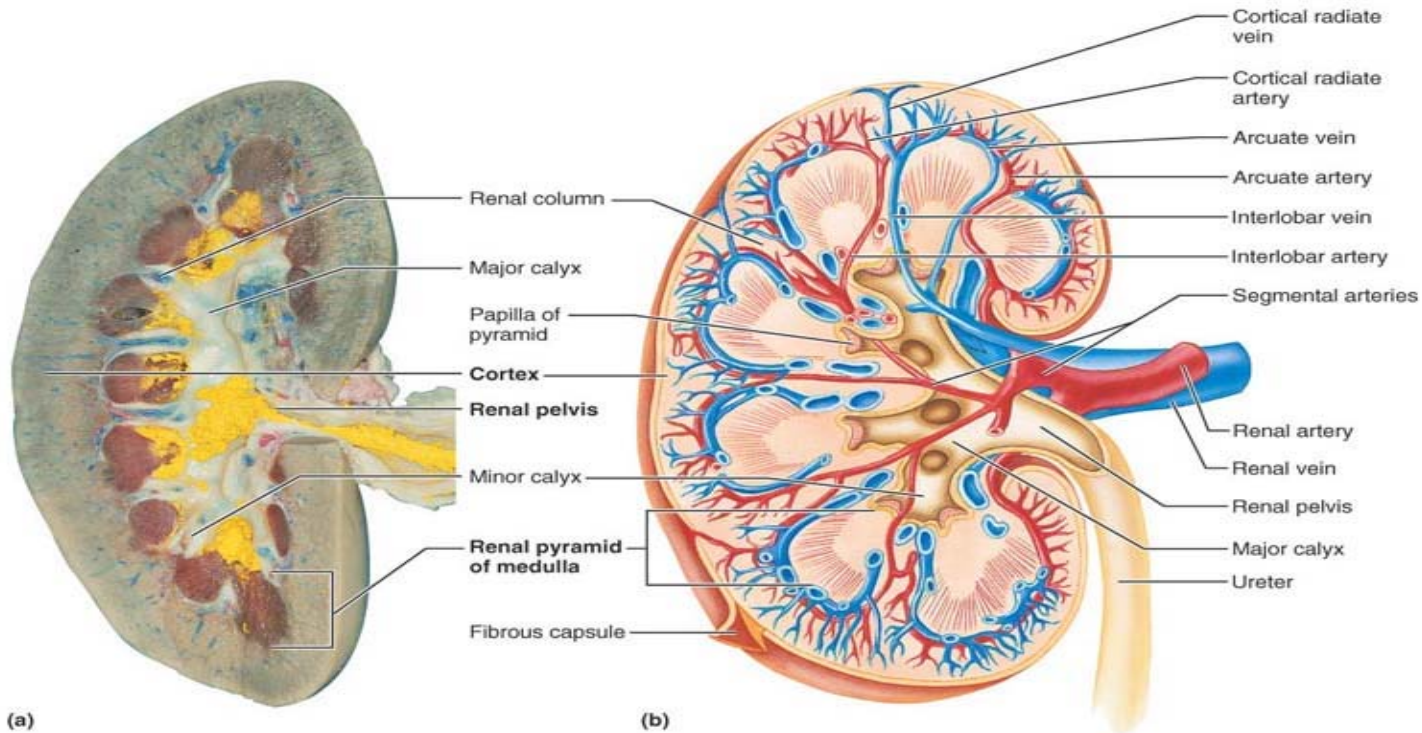
AREA KOMPETENSI

- Komunikasi efektif
- Landasan ilmiah ilmu kedokteran
- Pengelolaan informasi
- Mawas diri dan pengembangan diri
- Etika, Moral, Medikolegal dan profesionalisme serta keselamatan pasien

BAGIAN TERINTEGRASI

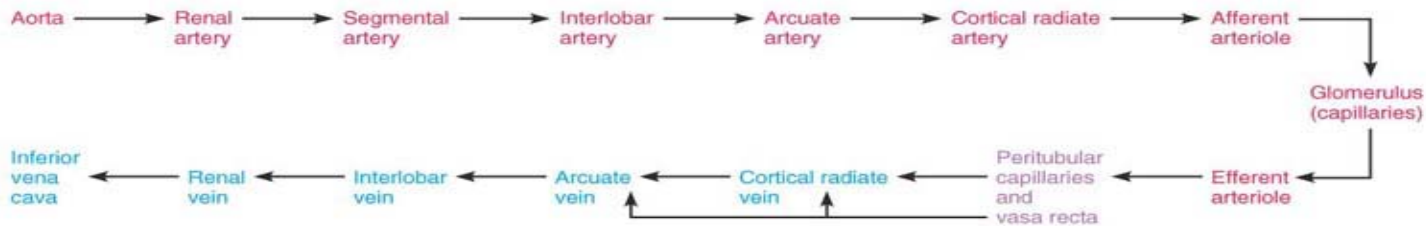
- Anatomi
- Biologi
- Histologi
- Biokimia
- Fisiologi
- IPD
- IKA
- PK
- Obgyn

Kidney Anatomy



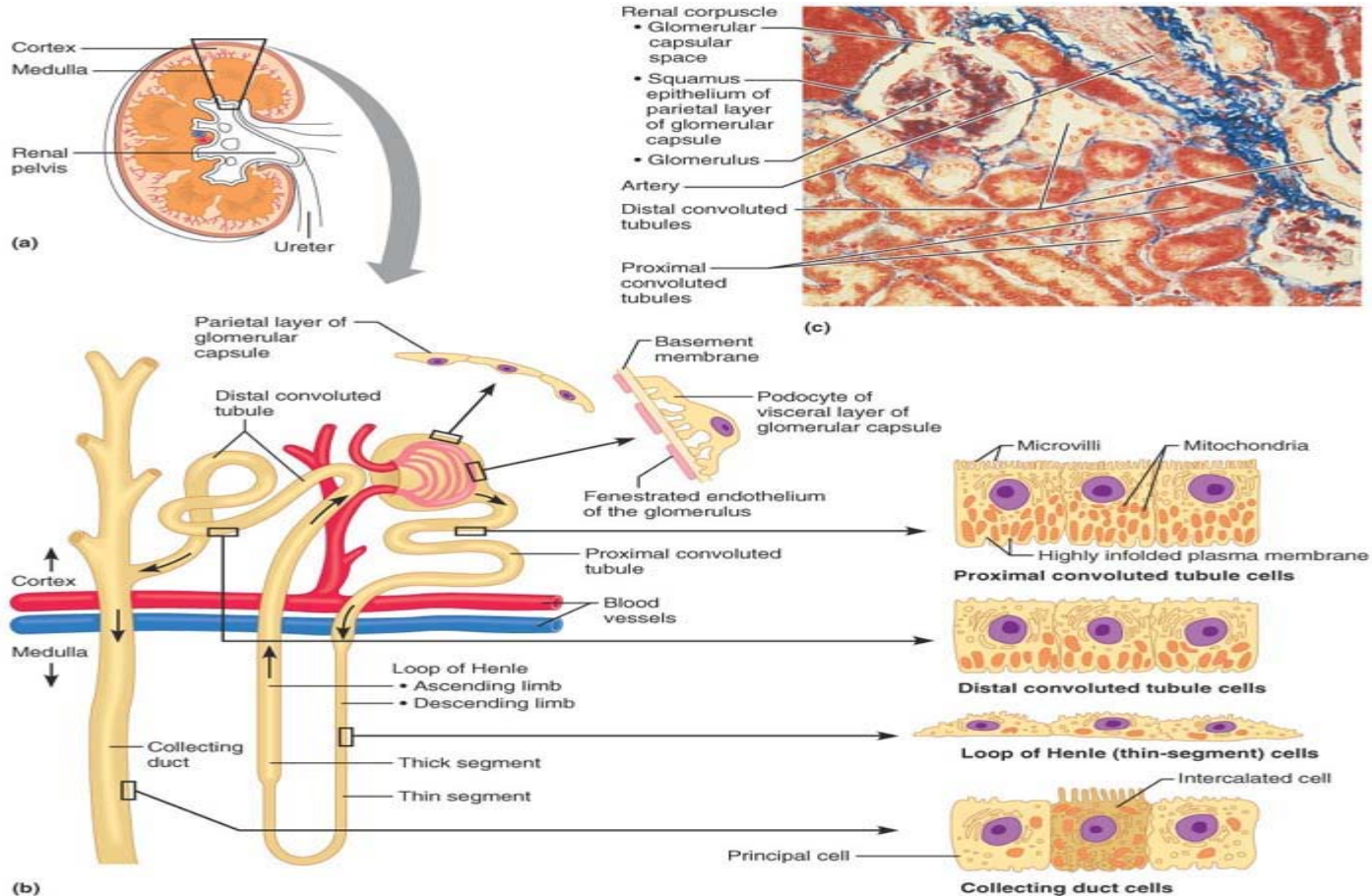
(a)

(b)

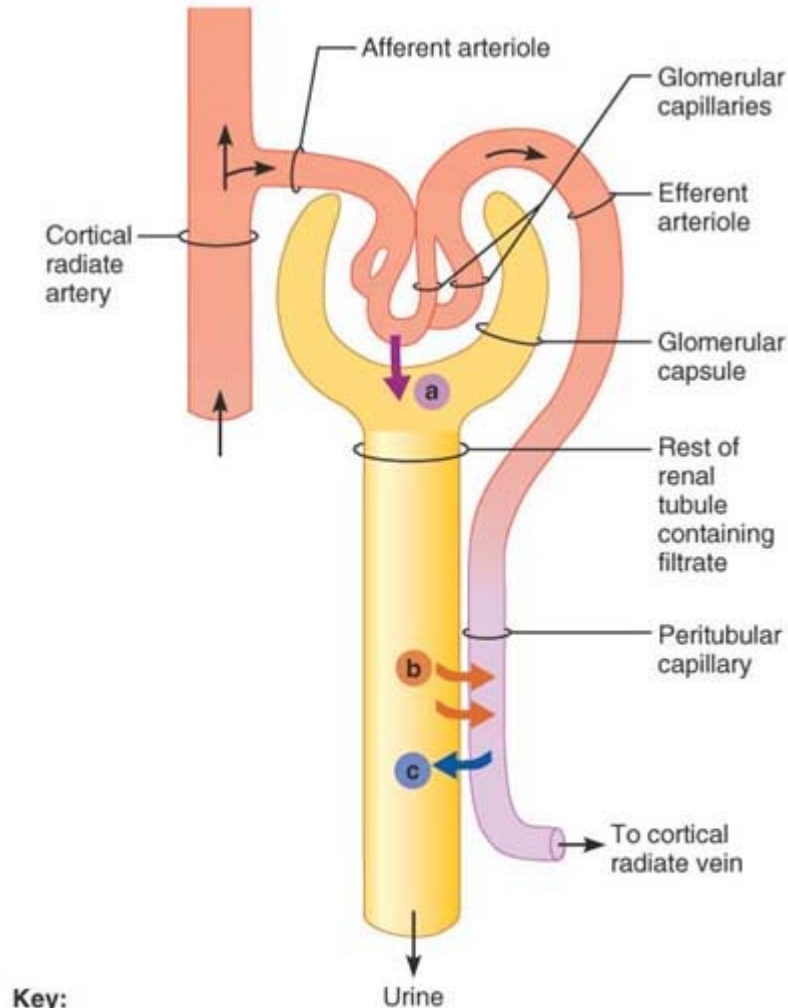


(c)

Kidney Histology



Kidney Physiology: Mechanisms of Urine Formation



Key:

a (purple arrow) = Glomerular filtration

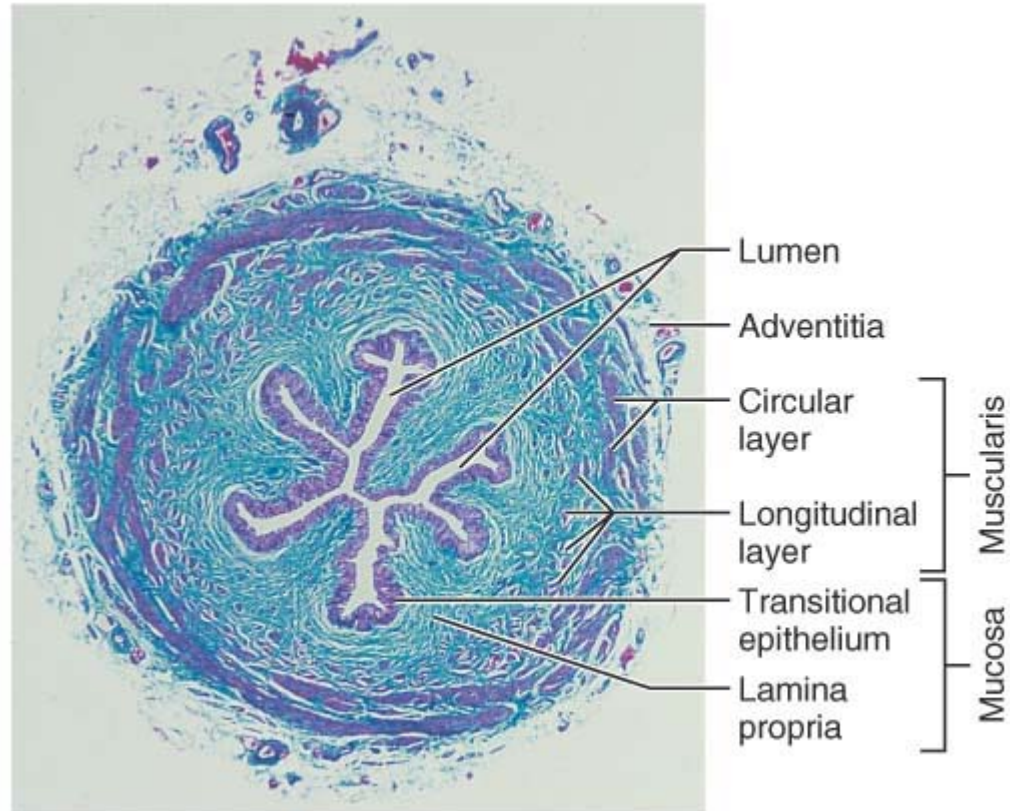
b (orange arrow) = Tubular reabsorption

c (blue arrow) = Tubular secretion

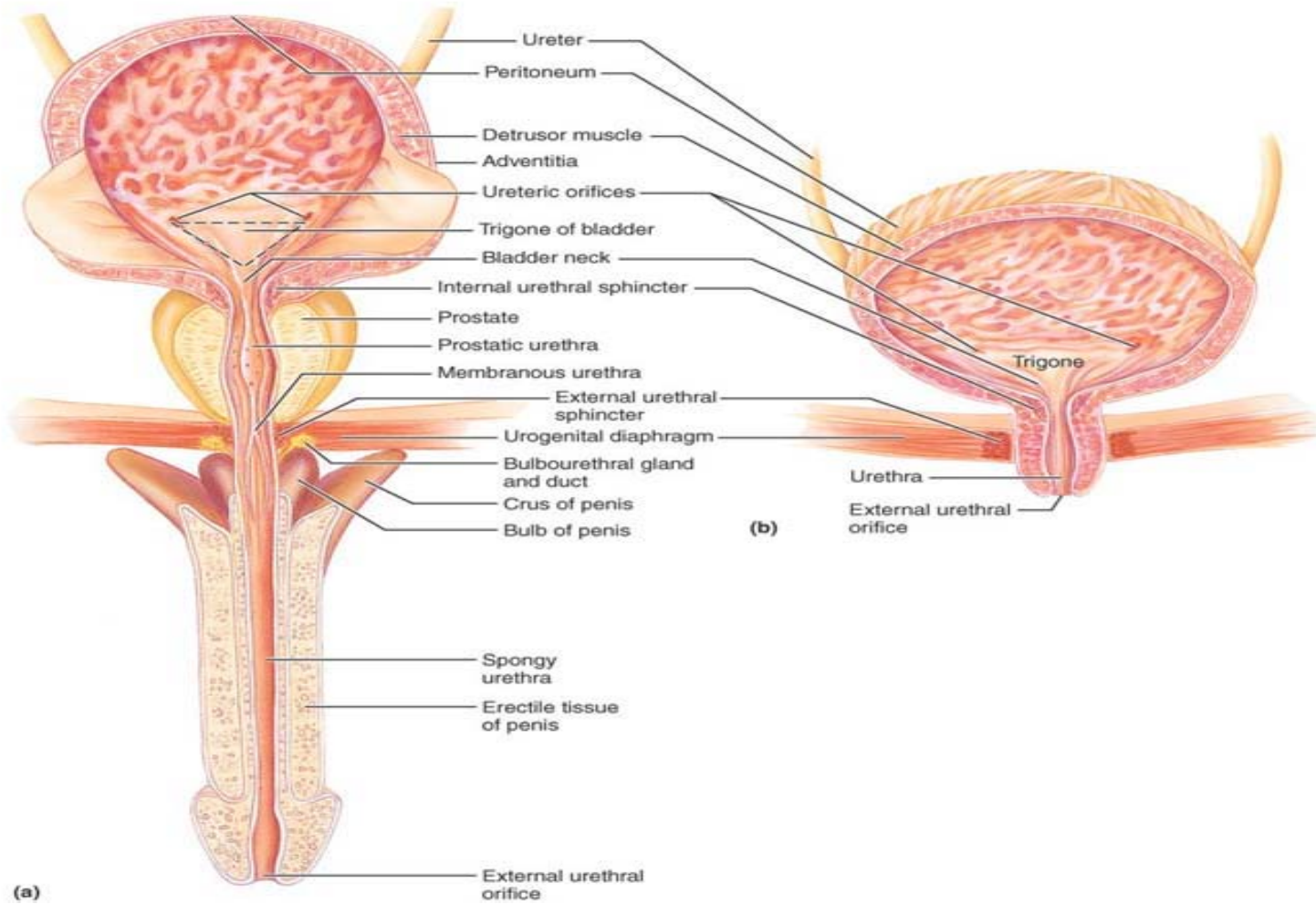
Biokimia & Kelainan Urine

- Komposisi dan kelainan
- BJ, pH
- Sendimen urin

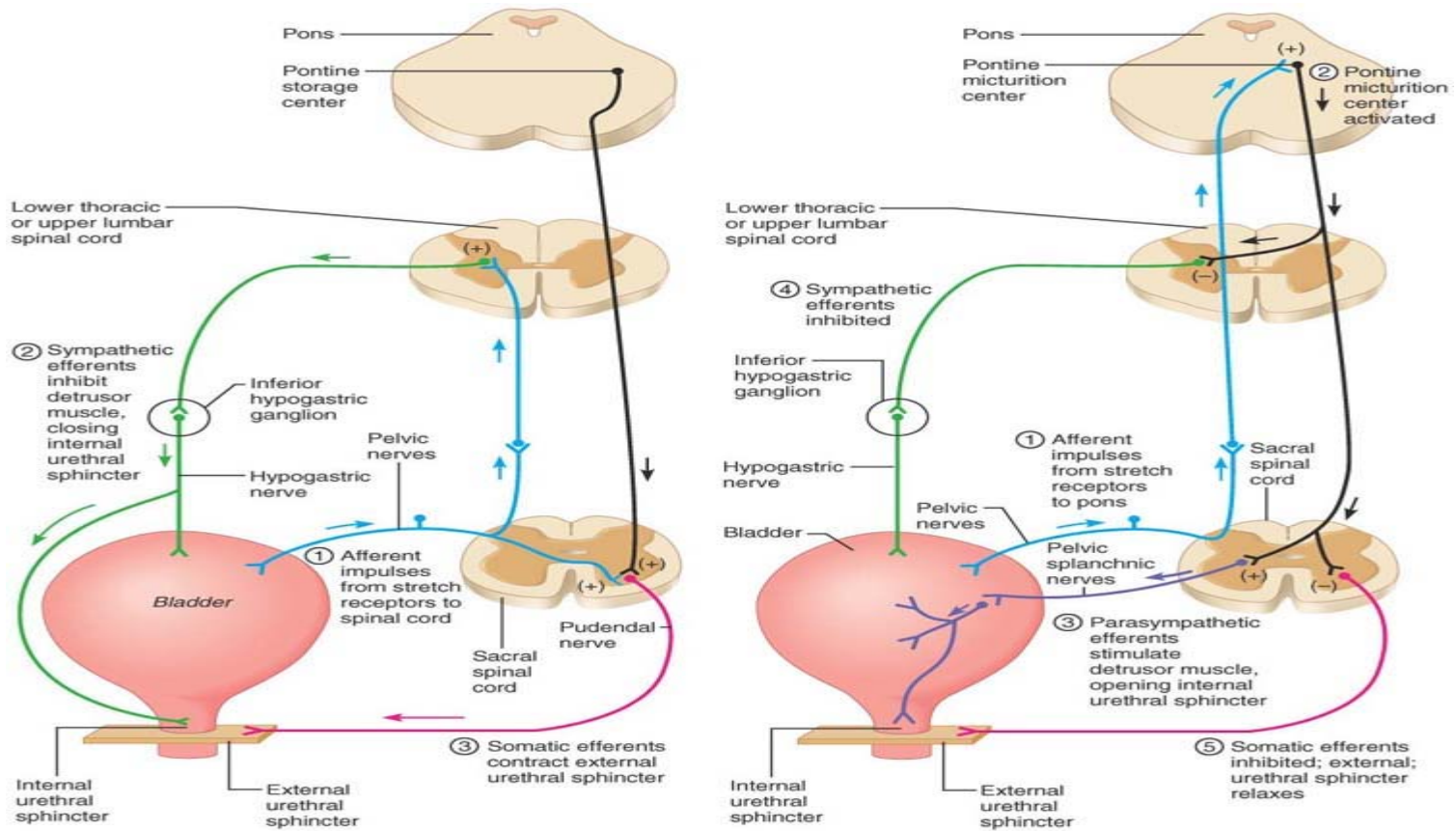
Ureters



Urinary Bladder



Micturition



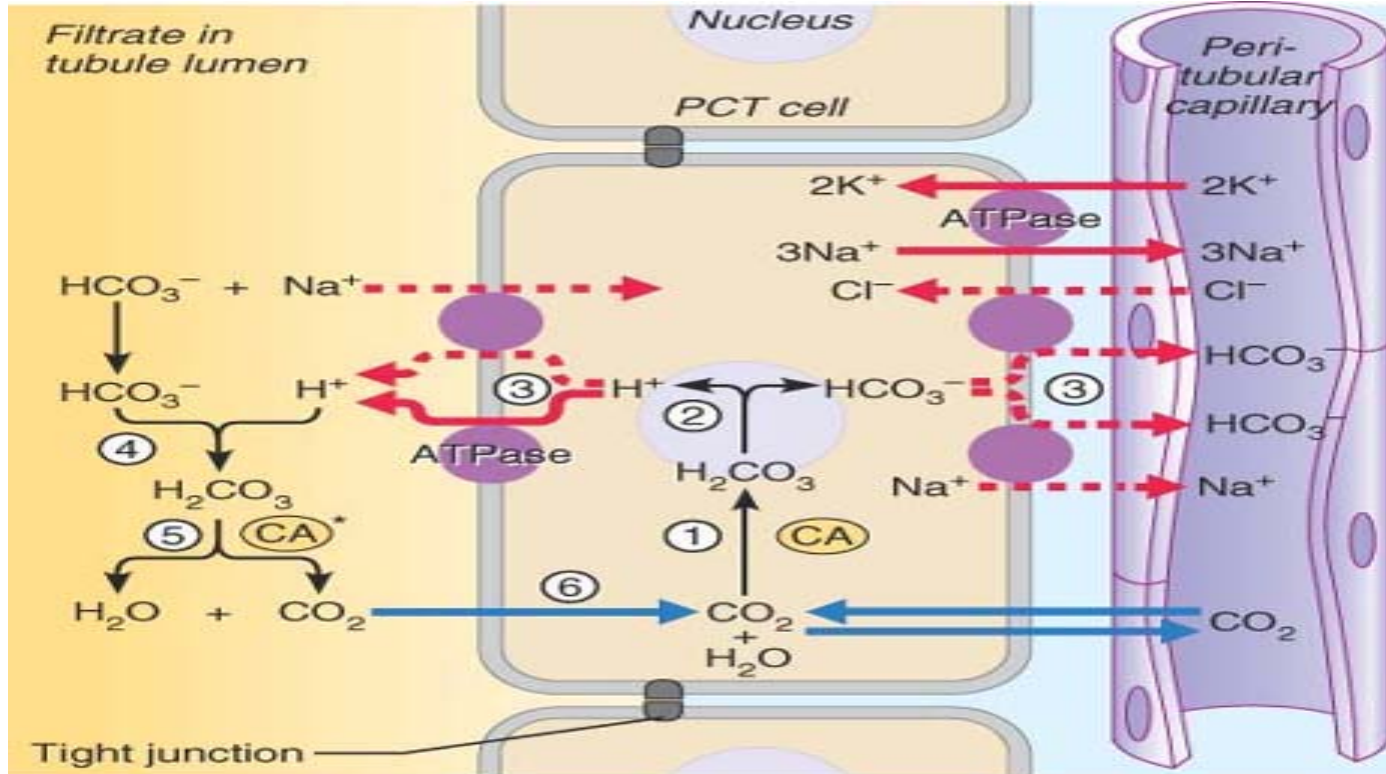
(a) Storage reflexes

Key:

- (+) Excitatory synapse
- (-) Inhibitory synapse
- Visceral afferent
- Sympathetic
- Somatic efferent
- Parasympathetic
- Interneuron

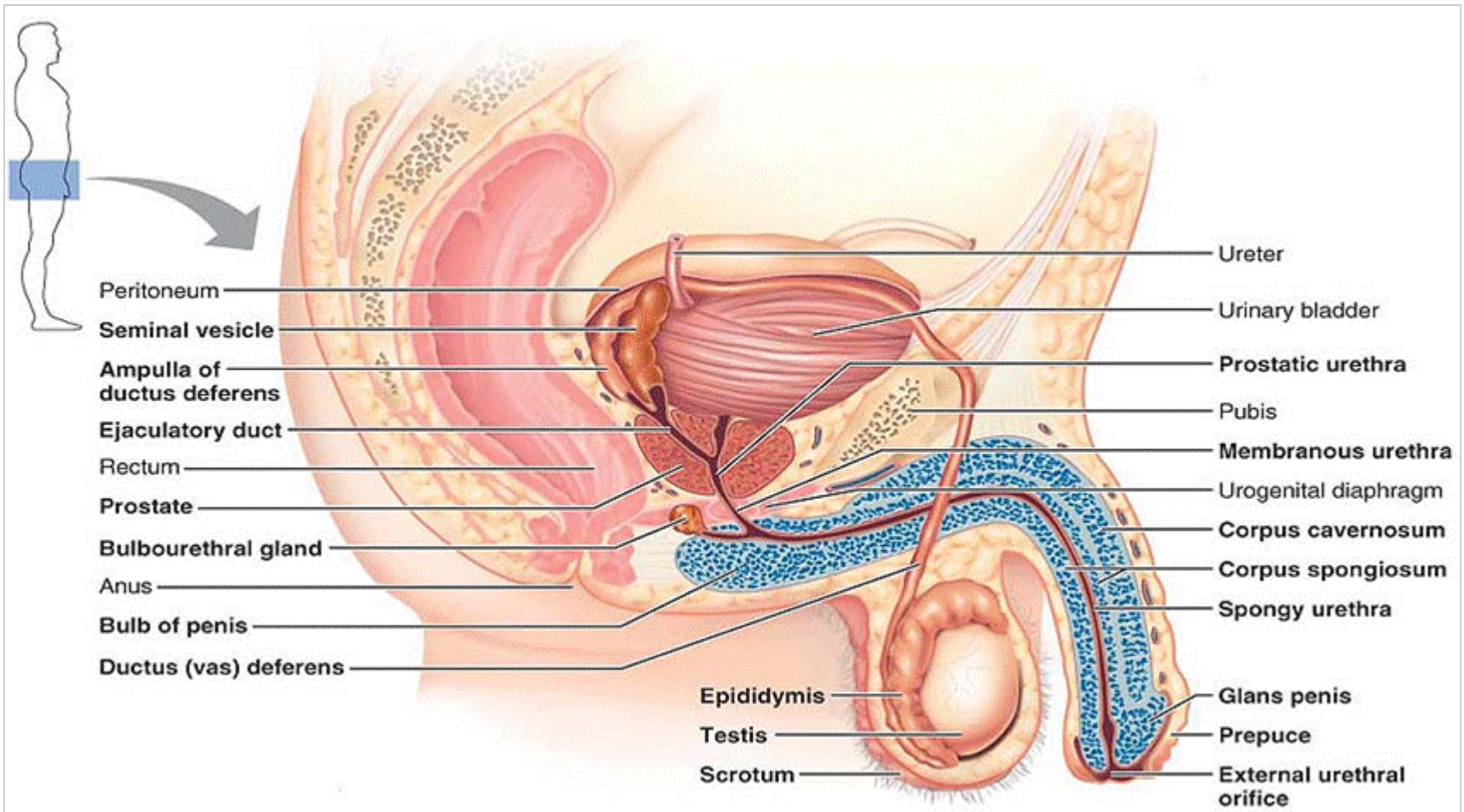
(b) Micturition reflex

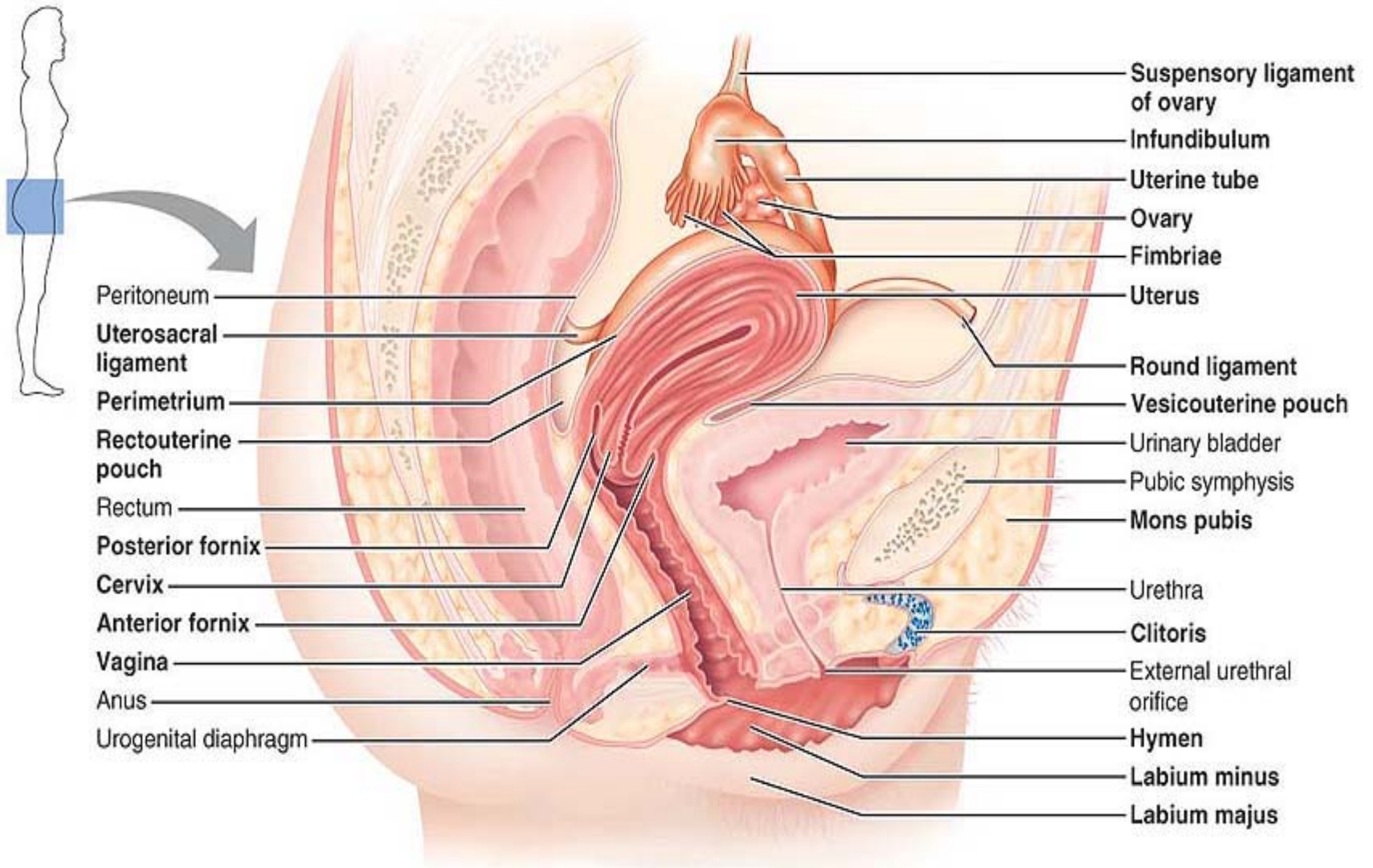
Electrolyte, and Acid-Base Balance

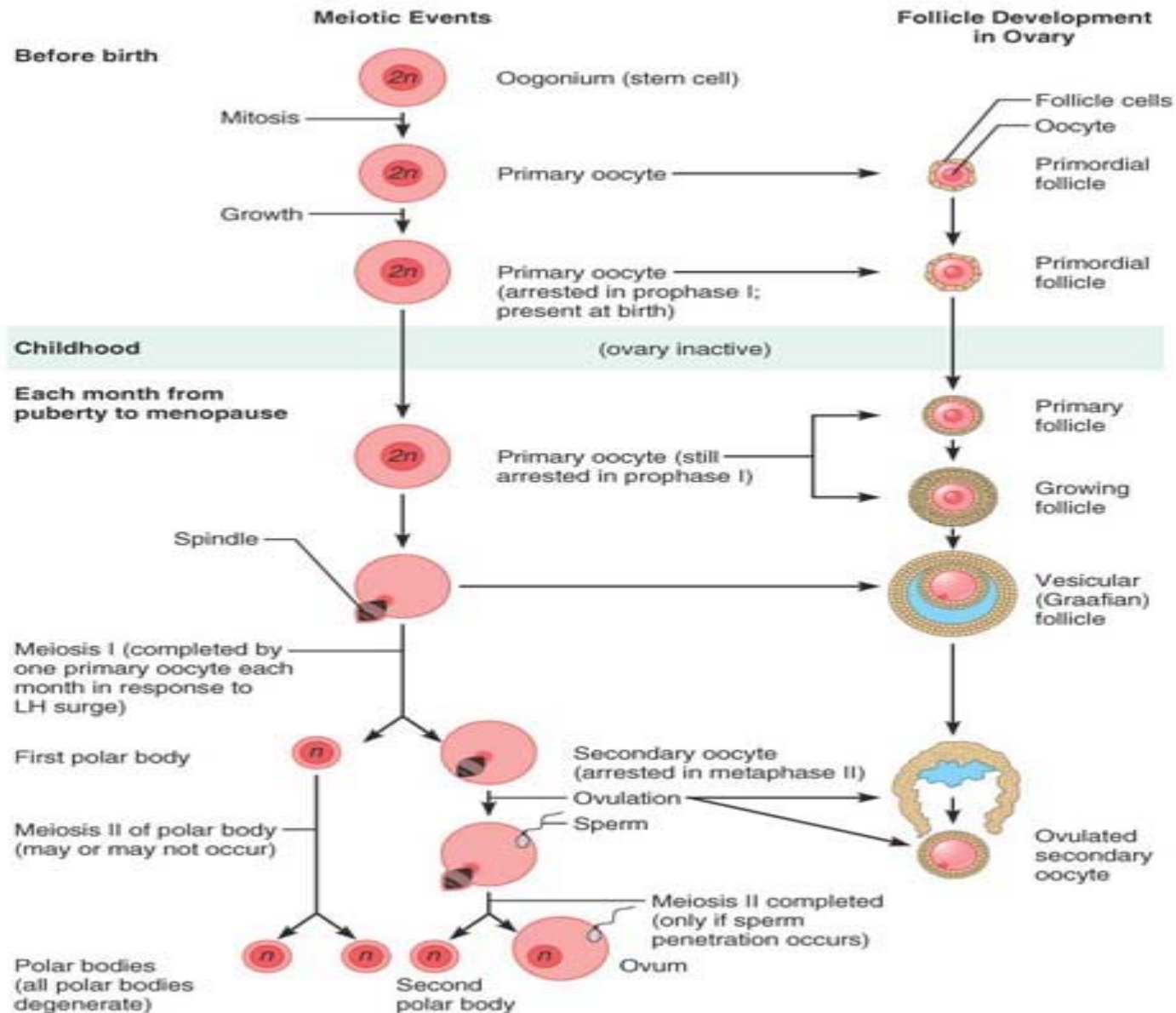


The Reproductive System

- Wanita
- Laki-laki
- Kelainan kongenital]
- Kelainan Klinis







REFERENSI

- Atlas anatomi
- Anatomi Snell
- Atlas Histologi
- Biokimia Harper
- Fisiologi Guyton, Ganonng, Tortora
- Etc?

TUTORIAL

- **SKENARIO 1 :**
- **SKENARIO 2 :**
- **SKENARIO 3 :**
- **SKENARIO 4 :**
- **SKENARIO 5 :**
- **SKENARIO 6 :**

Skills Lab

- *Physical diagnostic skills:*
 - Pemeriksaan urogenital
 - Pria
 - Procedural skills:
 - » Pemasangan kateter
 - Pemeriksaan Ginekology
 - Inspeksi , palpasi genitalia eksterna
- Laboratory skills: URIN 1:
 - makroskopis/ mikroskopis (sediment)

Praktikum

- Anatomi
- Histology
- Biokimia
- Biology
- Clinical phtology

Evaluasi

- Tutorial
- Skills lab
- Ujian akhir Blok