

- Home
- Journal Rankings
- Journal Search**
- Country Rankings
- Country Search
- Compare
- Map Generator
- Help
- About Us

Journal Search

Search query

 in **Journal Title**

Exact phrase

International Journal of Earth Sciences and Engineering

Country: India

Subject Area: Earth and Planetary Sciences | Engineering | Environmental Science

Subject Category:

Category	Quartile (Q1 means highest values and Q4 lowest values)															
	1999	2000	2001	2002	2003	2004	2005	2006	2007	2008	2009	2010	2011	2012	2013	2014
Building and Construction													Q4	Q4	Q4	Q4
Civil and Structural Engineering													Q4	Q4	Q4	Q4
Earth and Planetary Sciences (miscellaneous)													Q4	Q3	Q3	Q3
Environmental Engineering													Q4	Q4	Q4	Q4
Ocean Engineering													Q4	Q3	Q3	Q3

Publisher: Cafet-Innova Technical Society, **Publication type:** Journals. **ISSN:** 09745904

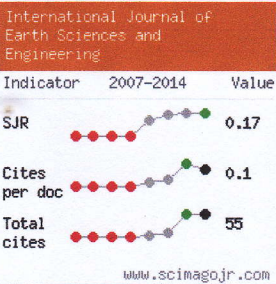
Coverage: 2010-2014

H Index: 4

Charts

Data

Show this information in your own website



Display journal title

Just copy the code below and paste within your html page:

```
<a href="http://www.scimagojr.com"
```

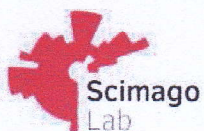
SJR indicator vs. Cites per Doc (2y)

Related product



@scimago

SJR is developed by:



Powered by
Scopus

The SJR indicator measures the scientific influence of the average article in a journal, it expresses how central to the global scientific discussion an average article of the journal is. Cites per Doc. (2y) measures the scientific impact of an average article published in the journal, it is computed using the same formula that journal impact factor™ (Thomson Reuters).

Citation vs. Self-Citation

June 2016

Volume 09 SPL No 03

ISSN 0974-5904

INTERNATIONAL JOURNAL OF EARTH SCIENCES AND ENGINEERING

Indexed in: Scopus Compendex and Geobase (products hosted on Engineering Village)
Elsevier, Amsterdam, Netherlands, Geo-Ref Information Services-USA, List B of Scientific
Journals in Poland, Directory of Research Journals

**SJR: 0.17 (2014); H-index: 6 (2015);
CSIR-NISCAIR, INDIA Impact Factor 0.042 (2011)**

EARTH SCIENCE FOR EVERYONE

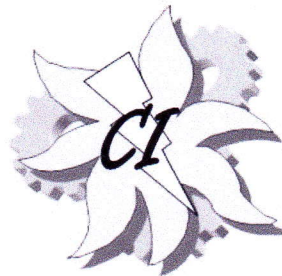
Special Issue of
**3rd International Conference on Earth Sciences and Engineering
(ICEE 2016)**

17th-18th June, 2016

<http://icee.cafetinnova.org/>

Jointly Organized by

**Department of Civil Engineering,
Nehru Institute of Technology, Coimbatore, India &
Cafet Innova Technical Society, Hyderabad, India**



Published by

**CAFET-INNOVA Technical Society
Hyderabad, INDIA**

<http://cafetinnova.org/>

CAFET-INNOVA Technical Society

1-2-18/103, Mohini Mansion, Gagan Mahal Road, Domalguda
Hyderabad – 500 029, Andhra Pradesh, INDIA

Website: <http://www.cafetinnova.org>

Mobile: +91-7411311091

Registered by Government of Andhra Pradesh

Under the AP Societies Act., 2001

Regd. No.: 1575

The papers published in this journal have been peer reviewed by experts. The authors are solely responsible for the content of the papers published in the journal.

Each volume, published in six bi-monthly issues, begins with February and ends with December issue. Annual subscription is on the calendar year basis and begins with the February issue every year.

Note: Limited copies of back issues are available.

Copyright © 2015 CAFET-INNOVA Technical Society

All rights reserved with CAFET-INNOVA Technical Society. No part of this journal should be translated or reproduced in any form, Electronic, Mechanical, Photocopy, Recording or any information storage and retrieval system without prior permission in writing, from CAFET-INNOVA Technical Society.

INTERNATIONAL JOURNAL OF EARTH SCIENCES AND ENGINEERING

The International Journal of Earth Sciences and Engineering (IJEE) focus on Earth sciences and Engineering with emphasis on earth sciences and engineering. Applications of interdisciplinary topics such as engineering geology, geo-instrumentation, geotechnical and geo-environmental engineering, mining engineering, rock engineering, blasting engineering, petroleum engineering, off shore and marine geo-technology, geothermal energy, resource engineering, water resources and engineering, groundwater, geochemical engineering, environmental engineering, atmospheric Sciences, Climate Change, and oceanography. Specific topics covered include earth sciences and engineering applications, RS, GIS, GPS applications in earth sciences and engineering, geo-hazards such as earthquakes, landslides, tsunami, debris flows and subsidence, rock/soil improvements and development of models validations using field, laboratory measurements.

Professors / Academicians / Engineers / Researchers / Students can send their papers directly to: chiefeditor_ijee@yahoo.com

CONTACT:

For all editorial queries:

D. Venkat Reddy (Editor-in-Chief)
Professor, Department of Civil Engg.
NIT-Karnataka, Surathkal, INDIA
☎ +91-9739536078
✉ dvr1952@gmail.com

All other enquiries:

Hafeez Basha. R (Managing Editor)
☎ +91-9866587053
✉ hafeezbasha@gmail.com
Raju Aedla (Editor)
☎ +91-7411311091
✉ rajucits@gmail.com

EDITORIAL COMMITTEE

D. Venkat Reddy

NITK, Surathkal, Karnataka, INDIA

EDITOR-IN-CHIEF

Trilok N. Singh

IIT-Bombay, Powai, INDIA

EXECUTIVE EDITOR

P. Ramachandra Reddy

Scientist G (Retd.), NGRI, INDIA

EXECUTIVE EDITOR

R. Pavanaguru

Professor (Retd.), OU, INDIA

EXECUTIVE EDITOR

Joanna Maria Dulinska

Cracow University of Tech., Poland

EXECUTIVE EDITOR

Hafeez Basha R

CAFET-INNOVA Technical Society

MANAGING EDITOR

Raju Aedla

CAFET-INNOVA Technical Society

EDITOR

INTERNATIONAL EDITORIAL ADVISORY BOARD

Zhuping Sheng

*Texas A&M University System
USA*

Choonam Sunwoo

*Korea Inst. of Geo-Sci & Mineral
SOUTH KOREA*

Hsin-Yu Shan

*National Chio Tung University
TAIWAN*

Hyun Sik Yang

*Chonnam National Univ Gwangu
SOUTH KOREA*

Krishna R. Reddy

*University of Illinois, Chicago
USA*

L G Gwalani

*NiPlats Australia Limited
AUSTRALIA*

Abdullah MS Al-Amri

*King Saud University, Riyadh
SAUDI ARABIA*

Suzana Gueiros

*Dra Engenharia de Produção
BRAZIL*

Shuichi TORII

*Kumamoto University, Kumamoto
JAPAN*

Luigia Binda

*DIS, Politecnico di Milano, Milan
ITALY*

Gonzalo M. Aiassa

*Cordoba Universidad Nacional
ARGENTINA*

Nguyen Tan Phong

*Ho Chi Minh City University of
Technology, VIETNAM*

Ganesh R. Joshi

*University of the Rykyus, Okinawa
JAPAN*

Kyriakos G. Stathopoulos

*DOMI S.A. Consulting Engineers Athens,
GREECE*

U Johnson Alengaram

*University of Malaya, Kuala Lumpur,
MALAYSIA*

Robert Jankowski

*Gdansk University of Technology
POLAND*

Paloma Pineda

*University of de Sevilla, Seville
SPAIN*

Vahid Nourani

*Tabriz University
IRAN*

Anil Cherian

*United Arab Emirates
DUBAI*

P Hollis Watts

*WASM School of Mines
Curtin University, AUSTRALIA*

Nicola Tarque

*Department of Engineering
Catholic University of Peru*

S Neelamani

*Kuwait Institute for Scientific
Research, SAFAT, KUWAIT*

Jaya naithani

*Université catholique de Louvain
Louvain-la-Neuve, BELGIUM*

Mani Ram Saharan

*National Geotechnical Facility
DST, Dehradun, INDIA*

G S Dwarakish

*NITK- Surathkal
Karnataka, INDIA*

Subhasish Das

*IIT- Kharagpur, Kharagpur
West Bengal, INDIA*

S Viswanathan

*IIT- Bombay, Powai, Mumbai
Maharashtra, INDIA*

K U Maheshwar Rao

*IIT- Kharagpur, Kharagpur
West Bengal, INDIA*

Ramana G V

*IIT- Delhi, Hauz Khas
New Delhi, INDIA*

Usha Natesan

*Centre for Water Resources
Anna University, Chennai, INDIA*

M R Madhav

*JNTU- Kukatpally, Hyderabad
Andhra Pradesh, INDIA*

Kalachand Sain

*National Geophysical Research Institute,
Hyderabad, INDIA*

R Sundaravadivelu

*IIT- Madras
Tamil Nadu, INDIA*

M K Nagaraj

*NITK- Surathkal
Karnataka, INDIA*

Arash Ebrahimabadi

*Azad University, Qaemshahr
IRAN*

S M Ramasamy

*Gandhigram Rural University
Tamil Nadu, INDIA*

Gholamreza Ghodrati Amiri

*Iran University of Sci. & Tech.
Narmak, Tehran, IRAN*

Chachadi A G

*Goa University, Taleigao Plateau
Goa, INDIA*

Girish Gopinath

*Geomatics Division
CWRDM, Kerala, INDIA*

Shamsher B. Singh

*BITS- Pilani, Rajasthan
Rajasthan, INDIA*

C Natarajan

*NIT- Tiruchirapalli,
Tamil Nadu, INDIA*

N Ganesan

*NIT- Calicut, Kerala
Kerala, INDIA*

Linhua Sun

*Suzhou University
CHINA*

Pradeep Kumar R

*IIT- Gachibowli, Hyderabad
Andhra Pradesh, INDIA*

Vladimir e Vigdergauz

*ICEMR RAS, Moscow
RUSSIA*

D P Tripathy National Institute of Technology Rourkela, INDIA	E Saibaba Reddy JNTU- Kukatpally, Hyderabad Andhra Pradesh, INDIA	Chowdhury Quamruzzaman Dhaka University Dhaka, BANGLADESH
Parekh Anant kumar B Indian Institute of Tropical Meteorology, Pune, INDIA	Datta Shivane Central Ground Water Board Hyderabad, INDIA	Gopal Krishan National Institute of Hydrology Roorkee, INDIA
Karra Ram Chandar NITK- Surathkal Karnataka, INDIA	Prasoon Kumar Singh Indian School of Mines, Dhanbad Jharkhand, INDIA	A G S Reddy Central Ground Water Board, Pune, Maharashtra, INDIA
Rajendra Kumar Dubey Indian School of Mines, Dhanbad Jharkhand, INDIA	Subhasis Sen Retired Scientist CSIR-Nagpur, INDIA	M V Ramanamurthy Geological Survey of India Bangalore, INDIA
A Nallapa Reddy Chief Geologist (Retd.) ONGC Ltd., INDIA	Bijay Singh Ranchi University, Ranchi Jharkhand, INDIA	S Suresh Babu Adhiyamaan college of Engineering Tamil Nadu, INDIA
C Sivapragasam Kalasalingam University, Tamil Nadu, INDIA	Xiang Lian Zhou ShangHai JiaoTong University ShangHai, CHINA	Debadatta Swain National Remote Sensing Centre Hyderabad, INDIA
Kripamoy Sarkar Assam University Silchar, INDIA	Ranjith Pathegama Gamage Monash University, Clayton AUSTRALIA	B M Ravindra Dept. of Mines & Geology, Govt. of Karnataka, Mangalore, INDIA
Nandipati Subba Rao Andhra University, Visakhapatnam Andhra Pradesh, INDIA	M Suresh Gandhi University of Madras, Tamil Nadu, INDIA	Autar Krishen Raina CSIR-CIMFR, Maharashtra, INDIA
H K Sahoo Utkal University, Bhubaneswar Odissa, INDIA	R N Tiwari Govt. P G Science College, Rewa Madhya Pradesh, INDIA	Nuh Bilgin Istanbul Technical University Maslak, ISTANBUL
M V Ramana CSIR NIO Goa, INDIA	N Rajeshwara Rao University of Madras Tamil Nadu, INDIA	Manish Kumar Tezpur University Sonitpur, Assam, INDIA
Salih Muhammad Awadh College of Science University of Baghdad, IRAQ	Sonali Pati Eastern Academy of Science and Technology, Bhubaneswar, INDIA	Safdar Ali Shirazi University of the Punjab, Quaid-i-Azam Campus, PAKISTAN
Naveed Ahmad University of Engg. & Technology, Peshawar, PAKISTAN	Raj Reddy Kallu University of Nevada 1665 N Virginia St, RENO	Glenn T Thong Nagaland University Meriema, Kohima, INDIA
Raju Sarkar Delhi Technological University Delhi, INDIA	Hanumantha Rao B School of Infrastructure IIT Bhubaneswar, INDIA	Samir Kumar Bera Birbal sahani institute of palaeobotany, Lucknow, INDIA
C N V Satyanarayana Reddy Andhra University Visakhapatnam, INDIA	S M Hussain University of Madras Tamil Nadu, INDIA	Vladimir Vigdergauz ICEMR, Russian Academy of Sciences Moscow, RUSSIA
T J Renuka Prasad Bangalore University Karnataka, INDIA	Deva Pratap National Institute of Technology Warangal, INDIA	K. Subramanian Coimbatore Institute of Technology Tamil Nadu, INDIA
Mohammed Sharif Jamia University New Delhi, INDIA	A M Vasumathi K.L.N. College of Inf. Tech. Pottapalayam, Tamil Nadu, INDIA	Deepak T J INTI International University Kuala Lumpur, MALAYSIA
C J Kumanan Bharathidasan University Tamil Nadu, INDIA	B R Manjunatha Mangalore University Karnataka, INDIA	Sivaraja M N.S.N College of Engg. & Technology Tamilnadu, INDIA
Ch. S. N. Murthy NITK- Surathkal Karnataka, INDIA	Jitendra Virmani Jaypee Uni. of Information Tech. Himachal Pradesh, INDIA	K Elangovan PSG College of Technology Coimbatore, INDIA
Vikram Vishal Department of Earth Sciences IIT Roorkee, INDIA	A K Verma Indian School of Mines Dhanbad, Jharkhand, INDIA	Saeed Khorram Eastern Mediterranean University Famagusta, CYPRUS

INDEX

Volume 09

June 2016

No.03

RESEARCH PAPERS

- Analysis of Effect of Reinforcement on Stability of Slopes** 01-06
By AKSHAY KUMAR JHA, MADHAV MADHIRA AND G V N REDDY
- Influence of Operational Parameters on the Efficiency of Rod Mill: A Design of Experiments Approach** 07-13
By K RAM CHANDAR, ASHWIN J BALIGA, B S S RAO AND R K BISEN
- Transformation of Chennai City as Nucleus of Regional Development through the Emergence of Sub-CBD's** 14-20
By D KARTHIGEYAN
- Mechanical Properties of High Calcium Flyash Geopolymer Concrete** 21-25
By V C PRABHA AND V REVATHI
- Assessment of Wave Energy Potential along South Maharashtra Coast** 26-31
By JUSTIN THOMAS T, K H BARVE, L R RANGANATH AND G S DWARAKISH
- Experimental Investigation on Strength Aspects of Glass Fiber-Reinforced Fine Grained Soil** 32-39
By SUCHIT KUMAR PATEL AND BALESHWAR SINGH
- Role of Time Buffer on Project Monitoring and Forecasting of Steel Structures – A New Approach to Structural Planning** 40-45
By VISHNU S PILLAI AND C RAJASEKARAN
- Utilization of Ground Granulated Blast Furnace Slag and Pulverized Fly ash in the Manufacture of Stabilized Mud Blocks** 46-53
By VENKATALAKSHMIYARLAGADDA AND BEULAH M
- Characteristics of Concrete Containing Waste Foundry Sand and Slag Sand** 54-59
By JOJU JOSE AND NABIL HOSSINEY
- Numerical Analysis of Bucket Foundations under Eccentric Lateral Loading in Medium Dense Sand** 60-65
By TANMOY KUMAR DEB AND BALESHWAR SINGH
- A Short Review of Anaerobic Co-Digestion and Feasibility of Anaerobic Co-Digestion of Sewage and Food Waste for Sustainable Waste Management** 66-70
By DIWAKAR SOMANI, HARSHITA SRIVASTAVA, SABUMON P C AND ANJALI G
- Eco-efficient Fiber Reinforced Self Compacting Concrete for Replacements of Cement and Natural Sand with Waste Materials** 71-77
By PRASAD M L V, PRASENJIT SAHA, ABHILASHA S AND MD FAISAL KARIM
- Psychological Effects of Travel Time Use** 78-83
By YOSRITZAL
- RS - GIS based Operational Monitoring of Indian Maritime and Environs** 84-92
By P KESAVA RAO, J K KISHORE, L J VJAYA KUMAR AND MURTHY REMILLA

Simulation of Damage of Waterfront Structure of Port of Kobe during Hyogo-ken Nanbu Earthquake by Using Three-Dimensional Non-linear Parallel Finite Element Analysis <i>By JAFRIL TANJUNG AND MAKOTO KAWAMURA</i>	93-99
Feasibility Study of Powdered Curry Leaf and Amla Fruit as Potential Filter Media for Treating Contaminated Lake Water <i>By N NATARAJAN, D HEMANTH KUMAR, K SAI SARAN NAVEEN, K AKHIL, K A GANESH BABU, A JYOTHSNA LAXMI AND M VASUDEVAN</i>	100-104
Using QSWAT for Simulating Streamflow in a Highland Catchment of Humid Tropics <i>By CELINE GEORGE AND ASWATHY MOHAN</i>	105-108
A Critical Review of Multi Criteria Decision Making Methods for Infrastructure Planning and Sustainability Assessment of Infrastructure Projects <i>By B SURESH, ERINJERY JOSEPH JAMES AND JEGATHAMBAL P</i>	109-123
Soil Structure Interaction in Indian Seismic code: Recommendations for Inclusion of Potential Factors <i>By RAVI KANT MITTAL, ADITI AND SANKET RAWAT</i>	124-130
Estimation of PMP and Precipitations of Various Return Periods Using Statistical Approach—A Case Study for Gunderipallam Dam, Tamil Nadu, India <i>By S DIRAVIA BALAN AND M KRISHNAVENI</i>	131-136
Integrated River Basin Plan for Achencoil River in Kerala State, India <i>By LINDA P JAMES AND A B ANITHA</i>	137-143
Optimum Configuration of Rigid Barriers to Mitigate Avalanche Hazard <i>By VINAY CHAUDHARY, R K VARMA AND MAN MOHAN SINGH</i>	144-148
Properties of Bitumen Containing Powdered Gondorukem Rubber Additives <i>By ELSA EKA PUTRI AND PUJA PERDANA</i>	149-153
Analysis of Historical Strong Earthquake Impacts on Landslides at the Gansu Segment in the Bailongjiang River Basin, China <i>By SHOUYUN LIANG, WANJIONG WU, RUI SHOU BA AND YUTIAN KE</i>	154-160
Development of Subsurface Profile Using Geophysical Test Data <i>By SHIVAMANTH ANGADI, MAYANK K DESAI AND GOUDAPPA R DODAGOUDAR</i>	161-164
Quality Control of Cationic Emulsion Modified Cold Mix in Flexible Pavement <i>By M S RANADIVE AND ANUP KUMAWAT</i>	165-169
Investigation of Influence of Terrain on Rainfall for Vembanad Basin, Kerala, India <i>By RAKTIM HALDAR AND RAKESH KHOSA</i>	170-174
Influence of Zinc Oxide Nanoparticle on Strength and Durability of Cement Mortar <i>By D NIVETHITHA AND S DHARMAR</i>	175-181
A Review on Seismic Performance of Reinforced Masonry Structures <i>By UMADEVI R, A S ARUN KUMAR AND B V RAVI SHANKAR</i>	182-187
Effect of Waste Paper Sludge Ash on Engineering Behaviors of Black Cotton Soils <i>By R BARANI DHARAN</i>	188-191
Effectiveness of Bamboo Fiber as a Strength Enhancer in Concrete <i>By KAVITHA S AND T FELIX KALA</i>	192-196

Use of Gold Mine Tailings in Production of Concrete-A Feasibility Study <i>By B M RAMALINGA REDDY, K S SATYANARAYANAN, H N JAGANNATHA REDDY AND N PARTHASARATHI</i>	197-202
Experimental Investigation on the Behaviour of Bagasse Ash Reinforced Concrete Structural Members <i>By S AISHWARYA, K DAKSHAYINI AND P GAJALAKSHMI</i>	203-207
Generation of Synthetic Ground Motion for a Hard Rock Site in Intra Plate Region <i>By A RAVI KIRAN, S BANDOPADHYAY, M K AGRAWAL AND G R REDDY</i>	208-214
Modeling and Controlling of an Coordinated Power Control Grid Connected Hybrid System with Wind, PV and Fuel Cell Sources <i>By N S SRAMAKRISHNA, D N GAONKAR AND G S BHARATHI</i>	215-220
An Advanced GIS based Storm Water Drainage Networking Design for Bhimrad Area of Surat City (India) <i>By MANISHA DESAI AND JAYANTILAL N PATEL</i>	221-228
The Performance of the Accessibility to BRT Stop: A Case Study on Transpadang Metro Bus <i>By BAMBANG ISTIJONO, BAYU MARTANTO ADJI, TAUFIKA OPHIYANDRI, JOVI SATRIOS AND YOSRITZAL</i>	229-234
Parents Perception toward Road Safety Related to the Potential of Cycling to School in Urban Area <i>By BAYU MARTANTO ADJI, MOHAMED REHAN KARIM, BAMBANG ISTIJONO AND TAUFIKA OPHIYANDRI</i>	235-243
Linkages between Catchment Landscape Dynamics and the Natural Flow Regime <i>By VINAY S, BHARATH H A, SUBASH CHANDRAN M D, SHASHISHANKAR A AND RAMACHANDRA T V</i>	244-251
Impact Study on Ferrocement Slabs with Different Types of Mortar Matrices <i>By SEERAM APOORVA, M SAIHARAN, M ARAVINTHAN, H THAMIM ANSARI AND M NEELAMEGAM</i>	252-257
Flexural Behaviour of Cold Formed Steel Hat Shaped Beams <i>By ASHOK M, JAYABALAN P AND JAYA PRABHAKAR K</i>	258-263
Observation of Earthquake Precursors - A Study on OLR Scenario Prior to the Earthquakes of Indian and Neighboring Region Occurred in 2016 <i>By N VENKATANATHAN, V HAREESH AND W S VENKATESH</i>	264-268
Stability Assessment of a Hill Slope-An Analytical and Numerical Approach <i>By B BURAGOHAIN, J KUNDU, K SARKAR AND T N SINGH</i>	269-273
Predictions of Vulnerability Flood and Flood Prone Areas in Watershed West Sumatra Province using Arc-GIS and Category Value <i>By DARWIZAL DAOED, BUJANG RUSMAN, BAMBANG ISTIJONO AND ABDUL HAKAM</i>	274-279
Economic Design of Reinforced Concrete Columns under Direct Load and Uniaxial Moments <i>By SONIA CHUTANI AND JAGBIR SINGH</i>	280-284
Investigation on Partial Replacement of Coarse Aggregate using E-Waste in Concrete <i>By BALASUBRAMANIAN B, GOPALA KRISHNA GVT AND SARASWATHY V</i>	285-288

West Sumatra Landslide During in 2012 to 2015 <i>By ABDUL HAKAM AND BAMBANG ISTIJONO</i>	289-293
Performance on the Study of Nano Materials for the Development of Sustainable Concrete <i>By S SANJU, S SHARADHA AND J REVATHY</i>	294-300
Assessment of Flood Induced Area using Geo-Spatial Technique <i>By AJEET SINGH CHHABRA, SNIGDHADIP GHOSH AND VIJAY KUMAR DWIVEDI</i>	301-304
Deformational Behaviour of Coal Measure Rocks <i>By ASHUTOSH TRIPATHY, BANKIM MAHANTA AND TN SINGH</i>	305-309
Analysis and Design of Transmission Tower Using STAAD.PRO <i>By SAI AVINASH P, RAJASEKHAR P, SIDDHARDHA R, HARINARAYANAN R, CHAMANDEEP AND YASHDEEP</i>	310-313
Strength Properties of Roller Compacted Concrete Pavements Containing Fly ash and Triangular Polyester Fiber <i>By PRAMOD KESHAV KOLASE AND ATUL K DESAI</i>	314-322
Study on the Structural Behavior of Concrete Encased Steel Composite Members <i>By U ELAKEYA, A BHUVANESH SRE AND P GAJALAKSHMI</i>	323-329
Hot Pixel Identification using Satellite Hyper-spectral Data <i>By PIYUSH KUMAR GAURAV, VIVEK KUMAR GAUTAM, P MURUGAN AND M ANNADURAI</i>	330-334
Experimental Study on the Structural Performance of Composite Beam with J-hook Connectors <i>By SARATHKUMAR S, SIVACHIDAMBARAM M AND REVATHY J</i>	335-340
Influence of Fly Ash on Durability and Performance of Concrete <i>By V SESHASAYEE, B H BHARATKUMAR AND P GAJALAKSHMI</i>	341-346
Performance Comparison of Band Ratio and Derivative Ratio Algorithms in Chlorophyll-A Estimation using Hyperspectral Data <i>By P MURUGAN, R SIVAKUMAR, R PANDIYAN AND M ANNADURAI</i>	347-352
Structural Response of FRP Strengthened PSC Beams <i>By VIGNESH C K, SIVARANJAN D AND REVATHY J</i>	353-359
Strength and Setting Times of F-Type Fly Ash-Based Geopolymer Mortar <i>By KOLLI RAMUJEE</i>	360-365
Groundwater Prospects Mapping in Korapuzha River basin, Kerala, India - An Integrated Approach using Multicriteria Decision Making and GIS Techniques <i>By AMAL P SIVADAS, JESIYA N P AND GIRISH GOPINATH</i>	366-372
Optimum Position of Multi Outrigger Belt Truss in Tall Buildings Subjected to Earthquake and Wind Load <i>By A S JAGADHEESWARI AND C FREEDA CHRISTY</i>	373-377
Study on Reduction in Delay due to Road Accidents using Variable Message Sign <i>By GANGHA G, ARUNIMA JAYAKUMAR AND NIRMAL KUMAR P</i>	378-382
Spatial and Temporal Variation in Groundwater Quality and Impact of Sea Water in the Cauvery Delta, South India <i>By ASWIN KOKKAT, P JEGATHAMBAL AND E J JAMES</i>	383-392

Waste Water Treatment by Phyto-Remediation Technique <i>By ADITYA VIKRAM CHOPRA, UMANG K SHAH AND J S SUDARSAN</i>	393-399
An Experimental Investigation on Effect of Hybrid Fiber on High Strength Self Compacting Concrete and Vibrated Concrete <i>By K J N SAI NITESH AND S VENKATESWARA RAO</i>	400-403
Viscosity Graded Approach for Quality Control of Bitumen <i>By M S RANADIVE AND VINAYAK BOBADE</i>	404-410
Effects of Domestic Rawsewage on Mechanical Properties of Concrete Incorporating GGBS (Ground Granulated Blast Furnace Slag) <i>By SHILPA S RATNOJI, PRAVEEN S MALLAPUR, SHASHANK KANAVALLI AND K B PRAKASH</i>	411-414
Experimental Investigation on Modulus of Elasticity of Recycled Aggregate Concrete <i>By P S KULKARNI, A GHATGE, O KANK, A NAIR AND R ASWAR</i>	415-419
Geotechnical Characteristics of Volcanic Soils in and around Taiz City, Yemen <i>By JANARDHANA M R AND ABDUL-ALEAM AHMED A D AL-QADHI</i>	420-425
Experimental Studies on the Effect of Bagasse Ash and M-Sand on Mechanical Behaviour of Concrete <i>By BHUVANESHWARI M AND TAMILARASAN S</i>	426-431
Factors Contributing to the Success of a Resettlement Project: A Case Study on Batanghari Dam Project, Indonesia <i>By TAUFIKA OPHIYANDRI, UYUNG GATOT S DINATA, TAFDIL HUSNI, BAMBANG ISTIJONO AND ADI PUTRA</i>	432-435
An Immediate Review of Flood Characteristics on Delta Lowland Sumatra using D8 Model Spatial Analysis <i>By NURHAMIDAH, AHMAD JUNAIDI AND LIBRINA ANGGRAINI</i>	436-442



Predictions of Vulnerability Flood and Flood Prone Areas in Watershed West Sumatra Province using Arc-GIS and Category Value

DARWIZAL DAOED¹, BUJANG RUSMAN², BAMBANG ISTIJONO¹ AND ABDUL HAKAM¹

¹Civil Engineering Department, Andalas University, Padang, INDONESIA

²Agriculture Department, Andalas University, Padang, INDONESIA

Email: darwizaldoed@ft.unand.ac.id

Abstract: West Sumatra is an area of west coast of Sumatra; the topography is hilly to steep. It consists of 20 small watersheds with the area from 20 km² to 690 km². The annual rainfall is approximately 4950 mm / year or 340 mm / month (BWS, 2008). The area along the coast and estuaries are often vulnerable by flooding. Based on this phenomenon, it can be predicted that the flooding in the west Sumatra is caused by the combination of extremely heavy rainfall, length of the rivers which are mostly short and tides. The morphologically rivers that are relatively straight with many branches on the upstream side of the river also cause the situation getting more vulnerable. Flood vulnerability assessment and areas prone to flooding assessment was performed using the results of the land area of the satellite image map, Arc-GIS and hydrological data. The analysis was conducted by using quantitative approach to categorize and give dignity/values for each parameter that causes flooding. Data were collected from local government and field measurements. The classification of vulnerability was divided into five categories. According to the three watersheds, it was obtained the value that shows the characteristic with rather vulnerable and medium level to flooding and flood-prone areas. It is more dominant determined by rainfall, land use, specific discharge, and the influence of the coast and the existence of waterworks. If the rain occurs at the upstream of watershed at the same time with the rising of sea levels (tide), then there will be inundation due to the stagnant of drainage network systems where the city crosses. It happened for those watersheds of West Sumatra, for small watershed with area more vulnerable in the appeal of a large watershed. Therefore, an integrated flood management plays important role on this particular areas.

Keywords: Vulnerability, Watershed, Flood, Category, Value

1. Introduction

West Sumatera is a hilly area bounded in the east and western part of the Indonesian ocean. This area extends from the North to the South. As a result, this area is located on a steep slope up to the ramps. Steep terrain in the upstream rivers and estuaries are in the plains and partly below sea level. Therefore, there are many tributaries flow area and the river that is relatively straight. It is only at the upper which has many tributaries that merges with the main river (BWS V 2008).

Almost all rivers flowing from East to West with great discharge flow occur in the afternoon or tidal conditions. The tide generally occurs twice, that is in the evening and morning. The tides and discharge peaks occur at the same time, as a result, puddle happened at the confluence area (estuary). The phenomenon of flood often occurred in the last few years (Daoed, Bambang, Abdul, 2014). This flood was also caused by the growth of residential areas in the coastal region in which the change of the land use occurred from swamp into residential areas and public facilities. It was also as a result of climate change and changes of functions of forest area (BWS V 2008).

Based on the facts, it is essential to predict the vulnerability of flood and flood-prone land in the watershed. Therefore, it can be a reference for decision makers.

1.1 Area of the Study

The research is located in the province of West Sumatra, the north of the province of North Sumatra, the south of the province of Jambi and Bengkulu, also the Eastern of the province of Riau. This area is managed for agricultural land, plantation and residential area. The residential area is dominant along the coast. The agriculture is mostly farms of rice, pulses, oil palm and rubber and cocoa (Bakosurtanal 2011 and BWS 2008). In the picture below, it can be seen the limit of location of the provinces and area of the study. There are several watersheds, included small watershed and all of them used for irrigation, fishery and tourism.

The small watershed is the catchment area has an area smaller than 100 km². Besides, it was also found that the length of the river is less than 30 km. (Daoed, 2014), The statement is almost the same is also disclosed in another paper. (Azmeri 2016, Modrick, 2015).

The irrigation has been managed by the government and supported by the community through farmer groups since the first.

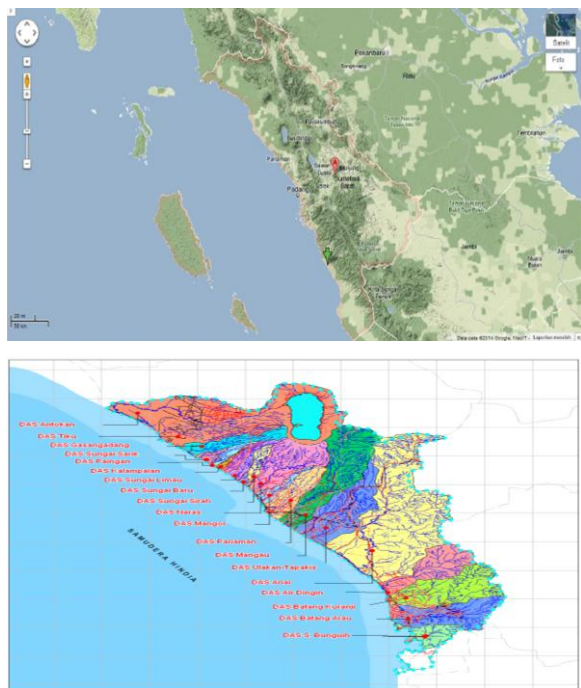


Figure 1. Region of West Sumatra - Indonesia and small watersheds

1.2 Watershed Management Pattern

The general pattern in managing the watershed is by analyzing the biophysical and socio-cultural characteristics. The characterization results can be used to determine the classification of watershed in the supportability of restored or maintained category.

Characterization is a series of activities or procedures to determine the character of each watershed, while the characteristics are as specific features of watershed that are shown by parameters depending on the circumstances morphometry, topography, soils, geology, vegetation and land use, hydrology and human (Seyhan, 1977, Paimin 2010).

To obtain the characteristics of the watershed, procedures that are arranged in a formulation which can provide a value that distinguishes one another are needed. The formulation is used as a basic in arranging the pattern of watershed management.

1.2.1. Characterization of Watershed

Watershed Characterization will be compiled in a typology of watershed formula (Paimin, 2013), where the typology of watershed will indicate the degree of vulnerability and potential of watershed. The typology of watershed will show the vulnerability and the potential of the watershed that consist of land typology, socio-economic typology which form the typology of catchment areas. The interaction between a catchment area of physical typology and the rain which falls on it will indicate the flood potential

and as a reflection of the input characteristic of rain and land. The interaction between the flood potential and flood-prone areas show the typology of flood in the watershed.

1.2.1.1 Typology of Land

A catchment area is a place of the rain to fall that includes watersheds and resource areas for human life.

The catchment area is considered as the processor of the rain that falls on it, then the characteristics of the land can be determined from the natural character and the characters that are managed by humans as natural resources, where the characters can be changed based on local community activities. The characteristics of the land are composed by natural parameters that make up the land, such as geology, slope and climate, while the parameters that are processed by the human are the land cover, such as agricultural areas.

1.2.1.2 Typology of Flood

Rain that falls in the catchment area will flow on the surface and it is partially saturated into the soil. Based on water system in the watershed, the flood potential is a reciprocal relationship between the typology of land and rain, which can be formulated between rainfall (R) and the vulnerability. Here rainfall (R) and land are grouped into five (5) categories. Table-1 Typology formula of flood water supply

Table 1. Typology formula of flood water supply

Rainfall(R) (mm)	Category-Value	score
<20	Very low	1
21-40	Low	2
41-75	Medium	3
76-150	High	4
>150	Very high	5

Source: Paiman, Planning Systems and Watershed Management, BPTKPDAS, 2013 and modifications

The flood-prone area is characterized by its land systems. The classification of the form of the land in table-2 can be used to express the vulnerability of flood area. The interaction rate of vulnerable areas of flood and the flood water supplies will lead to the degree of vulnerability of flood (flood typology) of a catchment area or watershed.

Table 2 System of vulnerable flood land

Land form	Category-Value	score
Mountains and hills	Very low	1
Fans and lava, terraces	Low	2
Plain	Medium	3
Alluvial plains, alluvial valleys	High	4
Swamps, coastal, pathways bends	Very high	5

Source: Paiman, Planning Systems and Watershed Management, BPTKPDAS, 2013 and modifications

1.2.2 Classification of the Level of Land and Flood Vulnerability

Land and flood vulnerability are grouped into five (5) categories. Each category is given a score from 1 to 5. To easy in determining the level of vulnerability, each category is completed by interval value that is derived from dividing of the difference between the highest and the lowest scores and it is divided by the number of category, or

$$IN = \frac{(\text{Highest score} - \text{lowest score})}{(\text{the number of category})}$$

In table -3, it can be seen the interval value for each category and the degree of vulnerability of flood and flood land that will be used as a reference in determining the classification of each watershed that is reviewed.

Table 3 Classification of typology or the vulnerability of land to erosion

Category	Interval Value	Level Vulnerability
Very high	$IN \geq 4.2$	Very vulnerable / very degraded
High	$3.4 \leq IN < 4.2$	Vulnerable / Degraded
Average	$2.6 \leq IN < 3.4$	Medium
Low	$1.8 \leq IN < 2.6$	Rather prone / Rather degraded
Very Low	$IN < 1.8$	Not vulnerable / not degradable

1.2.3 Changes of Qualitative Value into Quantitative Form

Natural parameters of flood potential that are taken more tend to be qualitative, for examples, the form of watersheds, the slope and the density of the river, as well as management parameters that are only types of closure/ the use of land, which are observed by satellite imagery maps. However, the value of the maximum daily rainfall average wet month and river morphology are in the form of quantitative values. Therefore, it is necessary to do an approach by converting the percentage of each parameter into a quantitative value in the terms of value, weight and score category.

2. Research Methods

In this study, classification of flood and flood-prone areas vulnerability by a qualitative approach that was changed into the quantitative one by giving value or score category was conducted. Then, it was described by using an approach of Arc-GIS version 10.3 software. The flood vulnerability or flood potential was observed on the parameters of natural effects (60%), namely: rainfall, the shape of watershed, the gradient of the streams, the density of the drainage, the average slope of the watershed. Moreover, for the parameter of natural effect (40%), the specific discharge was regarded. Meanwhile, the flood-prone areas that were observed on the parameters of natural effect (55%), namely: the terrain, meandering,

damming / branching river / tide. The percentage of left-right slope drainage of land and management effect (45%) was from the existence of waterworks.

3. Vulnerability Prediction of Flood and Flood Prone Areas

At the river basin areas in West Sumatra, it was discovered 20 watersheds which have various wide of catchment areas, namely, there are two watersheds above 500 km², and seven watersheds are under 300 km² and the rest are even under 100 km² (BWS V 2008).

Also, it has the land topography that is relatively the same, namely the steep and ramp hills near the coast. Due to the slope that is almost similar and the limitation of the rainfall observation post, then it was selected three watersheds that were representative, that is the watersheds which have small and large areas.

The watersheds which were studied entered into the territory of Padang city administration, such as, Kuranji watershed; and Tiku and Gasan Gadang watersheds that cross the city of Padang Pariaman.

3.1 Prediction of Watershed Vulnerability

Each parameter that was reckoned the watershed vulnerability to flood was weighted in advance. In the estimation of section (A), the weighting of the natural effect is 60% and management is 40%. In the natural weighting, the parameters consisted of 35% of rainfall, 5% of the watershed forms, 10% of the gradient of the streams, 5% of the drainage density, and 5% of the average of watershed slope. The weighting for the management parameter was 40% of the land use. In the estimation of section (B), a measurement parameter was in the form of 100% of a specific discharge. (Paimin-2013).

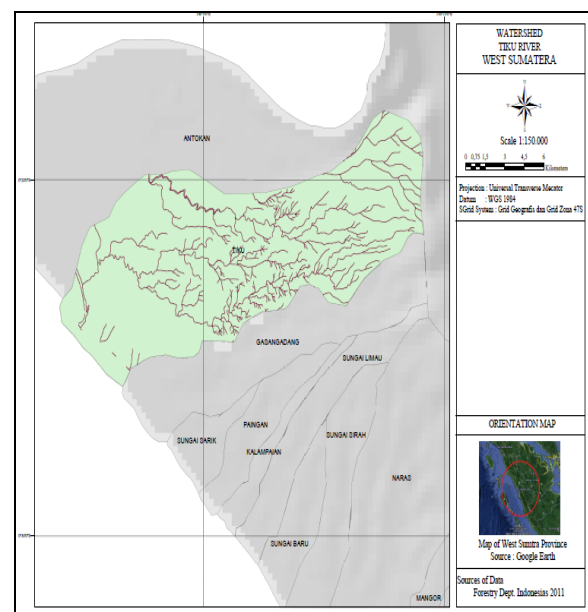


Figure 2. Description of river flow in watershed Tiku

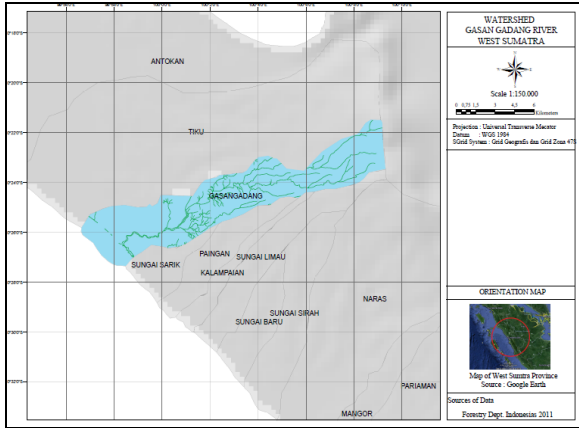


Figure 3. Description of river flow in watershed Gasan Gadang

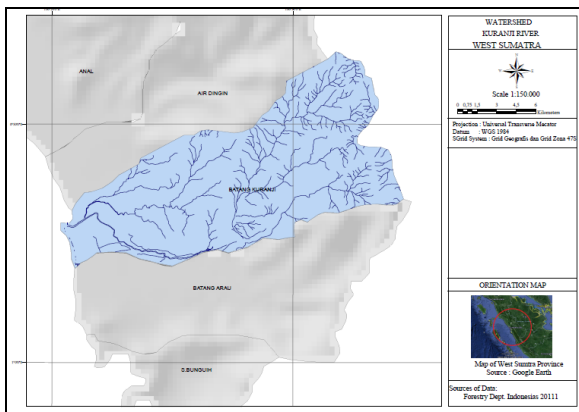


Figure 4. Description of river flow in watershed Kuranji

In estimating the vulnerability value of some parameters on flood was done by estimating the area of each parameter by using Arc-GIS software. For example, for the stream gradient is approximated by the land slope through the percentage of land area. The percentage of land area was calculated by using the ratio of the slope of the ecosystem per segment that were divided by the watershed area and multiplied by 100%. It was also for the average slope of watershed. Furthermore, for the specific discharge, monthly water discharge was used during the observation was divided by the watershed area. Then all the parameters in section (A) and (B) were summed.

To determine the classification of the typology of land vulnerability level against flood and flood-prone areas, then it was used a comparison which was similar with Rod, JK, Berthling, I., Lein, H., Lujala, P., Vatne, G., Bye, LM, 2012) did, in which it was to select an integrated vulnerability index. Thus, the typology classification was calculated by the average value of the flood vulnerability (VF) with the vulnerability of flood-prone areas (VA), ie

$$VR = \frac{1}{2} VF + \frac{1}{2} VA$$

VR = the value of vulnerability

In the table -4, it can be seen the results of the prediction of the flood vulnerability value (VF) also the category and level of the vulnerability. In the table-5, it was shown the results of the prediction of the vulnerability value of flood-prone area also the category and the degree of vulnerability of each watershed.

Table 4. Vulnerability to flood for each watershed

Watershed	Area (Km ²)	Value Flood (VF)			Category	Vulnerability level / Degradation
		A	B	R		
Kuranji	207.83	2.09	3	2.54	Low	Rather Vulnerable / Rather degraded
Tiku	117.60	2.05	2	2.02	Low	Rather Vulnerable / Rather degraded
Gasan Gadang	74.25	2.03	2	2.01	Low	Rather Vulnerable / Rather degraded

3.2 Discussion

In the predicted results of flood vulnerability, Table-4, it can be seen the effects of natural parameters and parameter measurements of annual specific water discharge nearly equal value. While the prediction of the vulnerability of land flood was strongly influenced by the effect of damming parameter in this case due to the tides, waterworks, the slope of drainage on the left and right. This was caused by the river is fairly straight and the downstream meets the sea (tidal conditions), so the effect of meandering was not so dominant.

Table 5. Vulnerabilities of flood prone areas of each watershed

Watershed	Area (Km ²)	Value (VA)	Category	Vulnerability level/ Degradation
Kuranji	207.83	3.18	Average	Medium
Tiku	117.60	3.24	Average	Medium
Gasan Gadang	74.25	3.24	Average	Medium

To determine the classification of the typology of the vulnerability of flood and erosion-prone land, it was done by adding up the value VF and VA and divided by two. It is assumed that the influence of these two values are equal. The prediction of the three Watershed, as shown in table -6 below:

Table 6. Classification of typology flood vulnerability

Watershed	Value			Category	The Vulnerability/ degradation
	VF	VA	VR		
Kuranji	2.54	3.18	2.86	Average	Medium
Tiku	2.02	3.24	2.63	Average	Medium

Gasam Gadang	2.01	3.24	2.63	Average	Medium
-----------------	------	------	------	---------	--------

It is seen that the value of the vulnerability to flood potentialis in a fairly vulnerable position (Table 4), while the vulnerability to the land of the floodis still in medium position. However, in the classification value of the typology of flood vulnerability, they are all in medium position. It shows that all Watersheds provide the same vulnerability indication. The effect of the vulnerability that causes some areas experienced the flood can be seen below.

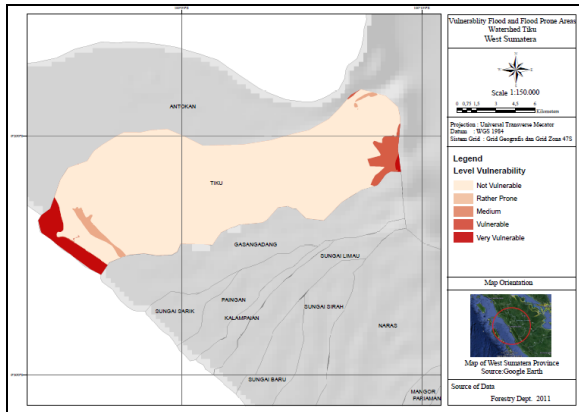


Figure 5. The level of vulnerability of flood prone areas in Tiku watershed

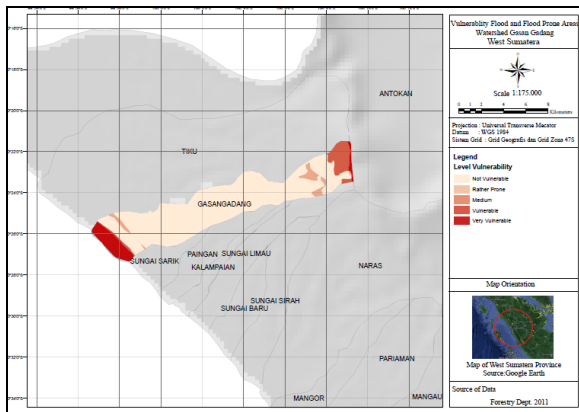


Figure 6. The level of vulnerability of flood prone areas in Gasan Gadang watershed

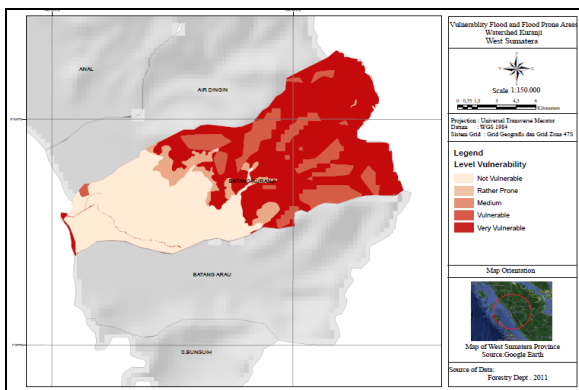


Figure 7. The level of vulnerability of flood prone areas in Kuranji watershed

In figure 5, it shows that predictions ofTiku watershed that will be inundated by water and the degree of vulnerability is classified as high susceptible to floodthat is on the edge of the beach. Meanwhile, others are not in the vulnerable condition . For figure 6, in the area of GasanGadang watershed,the floodis dominant in the areas along the coast with the level of vulnerability is very vulnerable, while others are included in invulnerable and somewhat vulnerable categories in the upstream. Then,if the figure 7 is seen carefully, it is different from the two previous pictures, where the areas with very high levels of vulnerability remain in the area of the seaside and in the upstream and the level of the vulnerability of upstream area is very degraded. This result is closely match with the phenomenon of flash floods on 24 July 2012 and 13 September 2012 (Abdul Hakam -2012). In which the debris flow that occurred brought catastrophic in the upstream and the huge material loss.

3.3 Conclusion

- 1) From the calculation of the value of watershed vulnerability to flood, it can stated that the smaller watersheds are more vulnerable than large watersheds. Although, the final result is the value of watershed vulnerability typologies included in the avarage category and vulnerability for all watersheds.
- 2) All of the seaside areas are at a very high level of flood vulnerability. Whereas, other regions are not at a vulnerable level of flood vulnerability.
- 3) EspeciallyKuranji watershed has a level of vulnerability to flood-prone areas is very high or very likely to be degraded. It is specifically at the seaside areas and the upstream.

4. Acknowledgements

The research was funded by the University of Andalas as aid research doctoral candidate in 2015 and I would like to thank the supervisor and co-supervisor who have given ideas, guidances and suggestions.

References

- [1] Azmeri, Iwan K., Rika Vadiya, “Identification of flash flood hazard zones in mountainous small watershed of Aceh Besar Regency, Aceh Province, Indonesia”, *The Egyptian Journal of Remote Sensing and Space Science*, Volume 19, Issue 1, pp 143–160, 2016.
- [2] Bakosurtanal, “*Flood Prone Data Base, Center for Land Survey of Natural Resources*”, Bakosurtanal, Cibinong, Indonesia, 2011.
- [3] BK. M. Syahril, Harkunti, P., Mohammad Farid, M. Bagus Adityawan, Tia Setiawati, Rasmiaditya Silasari, “Development Study on Map of the Flood Risk Index at Village Jakarta Bukit Duri”, (in Indonesia Language Studi Pengembangan Peta Indeks Resiko Banjirpada Kelurahan Bukit

- Duri Jakarta), *Civil Engineering Journal (Jurnal Teknik Sipil)*, Vol.17No.2, pp123-134, 2010.
- [4] BWS-V, "Report of Plan of Water Resources Management Pattern Akuaman River Region", (in Indonesia Language Laporan Rencana Pola Pengelolaan Sumber Daya Air Wilayah Sungai Akuaman-West Sumatera), Padang, Center for River Region -V, 2008.
- [5] Daoed, D., Bambang I., Abdul H., "Integration of Small Watershed to Meet Water Needs Using Channel Suppletion" (in Indonesian Language Integrasi Daerah Aliran Sungai Kecil untuk Memenuhi Kebutuhan Air Menggunakan Saluran Suplesi), *Conference PIT31 HATHI*, pp.177-184., 2014.
- [6] Hakam Abdul Fauzan, Febrin AI. "Introduction Structuring of vulnerable areas and the Regional Flood Mitigation As Comprehensive Efforts", (in Indonesian language Penataan Daerah rentan dan Daerah Banjir Bandang Sebagai Upaya Komprehensif Mitigasi Bencana), Report and Presentation, PSB-Unand, 2012.
- [7] Karagiorgos, Konstantinos, Thomas Thaler, Micha Heiser, Johannes Hübl, Sven Fuchs, "Integrated flash flood vulnerability assessment: Insights from East Attica, Greece", *Journal of Hydrology*, 2016.
- [8] Kodoatie, R.; Sugiyanto, "Flood and Some Causes and Methods Control of them in Environmental Perspectives", (in Indonesian Language Banjir dan Beberapa Penyebab dan Metode Pengendaliannya dalam Perspektif Lingkungan, Pustaka Pelajar, 2002.
- [9] Modrick, T.M., Georgakakos, K.P., The character and causes of flash flood occurrence changes in mountainous small basins of Southern California under projected climatic change. *Journal of Hydrology*, pp 312–336, 2015.
- [10] M.S. Kang, J.H. Goo, Song, J.A. Chu, Y.G. Her, S.W. Hwang, S.W. Park, "Estimating Design Floods Based on the Critical Storm Duration for Small Watersheds", *Journal of Hydro-Environment Research* 7, 2013.
- [11] Paiman, Irfan BP., Purwanto, Dewi RI., "System Planning Watershed Management, Development Research Center of Conservation and Rehabilitation", (in Indonesian Language : Sistem Perencanaan Pengelolaan Daerah Aliran Sungai, Pusat Penelitian Pengembangan Konservasi dan Rehabilitasi), Bogor - Indonesia, 2013.
- [12] Paimin, Sukresno, Purwanto, "Quick Detection of Sub watershed Degradation", Research and Development Center for Conservation and Rehabilitation of Forestry Research and Development Agency (FORDA)", Bogor, 2010.
- [13] Rod, J.K., Berthling, I., Lein, H., Lujala, P., Vatne, G., Bye, L.M., "Integrated Vulnerability mapping for wards in Mid-Norway. Local Environ". 2012
- [14] Subagyo, S., Seyhan, E. 1977., "Fundamentals of Hydrology" (in Indonesian Language: Dasar-dasar Hidrologi), Gajah Mada University Press, 1993.
- [15] Sheng, TC., "Watershed Management Planning: Practical Approaches, Strategies Approaches and Systems in Integrated Watershed Management", FAO Conservation Guide 14, FAO, UN, Rome, 1986.